



DT 950

CroPharm

Our first digital dissolution tester



ERWEKA

The new DT 950 Series

Digital today. For the challenges of the future.

The ERWEKA DT 950 Series is our first digital dissolution tester on the market, equipped with the most advanced technology for the requirements of today and the challenges of tomorrow.

With state-of-the-art embedded PC technology, the DT 950 is the first of its kind. The 7" touch display with a modern user interface focuses the user on the most important task the DT 950 has to fulfill - 100% USP/EP/JP compliant dissolution testing, without distractions and errors. For this purpose, we have designed the ERWEKA TestAssist, an intelligent helper that guides the user step by step through the configuration of the dissolution test, provides assistance and makes sure that only compliant parameters can be entered.

In addition to the modern user interface, the DT 950 is completely future-proof. With our „Upgrade your DT“ programme, it can be upgraded at a later date - e.g. from 6 up to 8 test stations, with an automatic tablet drop or an automatic sampling station, if the DT 950 is to be upgraded to a dissolution system at a later date. A switch from low-head to high-head mode is also easily possible at all times. Thanks to the advanced embedded system, software functions for the touch display can also be added later.

With all these innovations, however, we have not lost sight of the most important thing: The DT 950 Series are 100% USP/EP compliant.



USP methods
1, 2, 5 and 6

100%

100%
USP/EP/JP
compliant



Intuitive
touch interface



Upgradeable
at any time



sales@cropharm.com



203-877-3859



www.cropharm.com

Digital embedded PC technology

The digital embedded PC technology offers all advantages and unlimited possibilities of modern software programming making the DT 950 is more future-proof than ever before. In the first step, this means simple network printing and a modern user interface. In the future, the DT 950 Series will be expanded with additional functions and can thus constantly adapt to the user's requirements and future industry 4.0 developments.

Modern user interface with TestAssist

The new, modern user interface of the DT 950 focuses the user on the most important function of the DT 950 - dissolution testing.

- TestAssist, the intelligent guide for dissolution testing
- DirectHelp, help directly on the screen with the tap of a button
- Multilanguage operation in English, French, Spanish, Russian, Chinese and German.



Upgrade your DT

The newly developed hardware of the DT 950 Series enables step by step upgradeability from a manual dissolution tester to a semi-automatic On-line-, Offline- or On-/Offline system.

- Upgrade up to 8 test stations
- Optional, automatic tablet drop
- ASS-9 automatic sampling station



sales@cropharm.com



203-877-3859



www.cropharm.com



sales@cropharm.com



203-877-3859



www.cropharm.com

The first digital dissolution tester

State-of-the-art technology that continues to evolve.

The DT 950 Series is driven by an embedded PC with an ARM quad-core processor directly integrated into the back of the 7" touch display. The Linux-based ERWEKA software is completely developed in-house, fusing it perfectly with more than 50 years of hardware experience and enabling completely new functions to make dissolution testing easier.

With this new digital technology based on Microsoft's cross platform compatible .NET Core, the DT 950 is your long-term partner for dissolution testing. The software is constantly evolving with new features so that the device can adapt to changing requirements.

In addition to the modern touch interface, the digital embedded PC in the DT 950 also enables other functions, such as convenient printing on network printers or the extensive multilingual capability with more than 5 languages.

The digital DT 950 Series is ready for today's tasks - and the challenges of the future.



Network and USB printing



Digital Embedded Technology

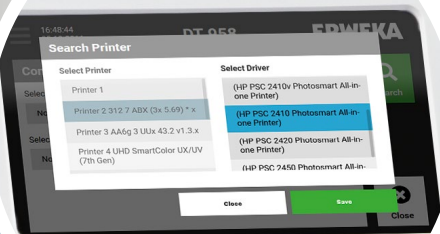


Multiple languages available

Network printing of the DT 950 explained

The technology platform of the DT 950 allows convenient use of network printers from many different manufacturers. Thanks to a practical printer setup, the LAN-connected DT 950 finds all printers in the network. Then all that remains is to select the right driver from a list and the DT 950 prints via the selected printer without any problems.

The DT 950 can currently print on network and USB printers from Hewlett-Packard, Kyocera and OKI. The DT 950 also supports USB printers from Brother. More printers coming soon.



sales@cropharm.com



203-877-3859



www.cropharm.com

1, 2, Test!

The DT 950 touch interface

The touch interface of the DT 950 focuses the user on the most important task to be done with the DT 950: dissolution testing. The central part is the TestAssist, an intelligent assistant with realtime feasibility checks that provides support and guarantees the conformity of the entered parameters according to USP/EP/JP. Dissolution testing thus becomes simple and safe. But we didn't stop at TestAssist - all other functions, such as the control panel, the qualification menu or the service menu, are also designed to connect user and hardware as quickly as possible.



Testing in
3 simple steps



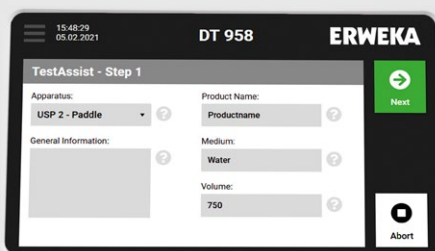
Parameterisation
within conform
ranges

TestAssist - dissolution testing easier than ever!

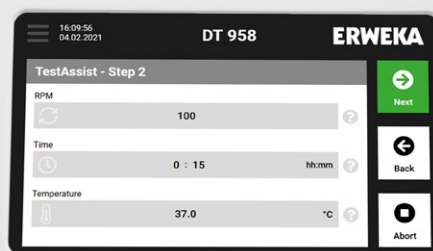
TestAssist is a comprehensive, yet simple wizard for the quick execution of dissolution tests. The user is guided step by step through the parameterisation, whereby incorrect entries are prevented by TestAssist. As soon as the dissolution test is running, the test screen displays all important status information about the test at any time.

Thanks to the large status animation, you can check from anywhere in the lab at a glance whether the test is running within the tolerances: green - all ok, or red - error, something went wrong.

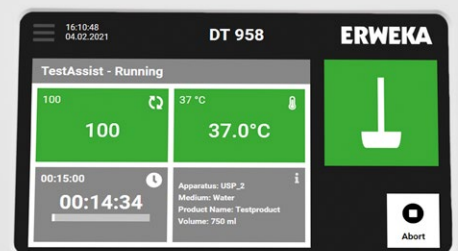
With the help of the intelligent TestAssist, dissolution testing is as easy and fast as ever!



1



2



Test!



sales@cropharm.com



203-877-3859



www.cropharm.com

Help, at any time

Each input field has a quickly accessible help function. Are you unsure what to enter in a field? Then just tap on the question mark right next to it and you will get help. This help function is distributed throughout the ERWEKA OS so that you can obtain information at any time.



Deutsch, English, Español, Français, 中文, русский...

The modern architecture of the ERWEKA OS enables a multitude of languages. This makes the DT 950 the most accessible device ERWEKA has ever developed. Anywhere in the world.

Direct access for customer service

The service menu gives the user direct access to the most important hardware functions and information of the DT. Serial number and software version can be quickly called up for service cases, and maintenance can be carried out faster and more efficiently.



Qualification made easy

Thanks to the new qualification function, qualifying the DT 950 is easy. To do so, simply enter the qualification menu and follow the instructions.



sales@cropharm.com



203-877-3859



www.cropharm.com

Upgrade your DT!

Unlimited upgradeability - at any time

Our world is turning faster and faster - this is why we designed a dissolution tester that is ready today for the challenges of tomorrow. The DT 950 can be upgraded even after the initial purchase - even from 6 to 7 or 8 test stations, with an automatic tablet drop or an automatic sampling station. The high degree of modularity means that, for example, a 6-station stand-alone DT 956 can be transformed into the heart of a complete dissolution

HPLC On-/Offline system with 8 test stations and Disso.NET 4 software within a very short time. This means that the DT 950 remains flexible throughout its entire instrument cycle - because who knows now what challenges we will be facing in a few years?



Automation level >>

DT 950 Series

Device Upgrades:

- Extension to up to 8 test stations
- Automatic tablet drop
- USP methods 1, 2, 5 and 6
- Automatic sampling station low-head or high-head

Dissolution Offline System*

- Automatic sample collection with our FRL sample collector
- IPC or PVP pump
- Control via PC with Disso.NET 4 with Audit Trail and SQL database*
- 21 CFR part 11 compliant

*Available in Q2/2021



sales@cropharm.com



203-877-3859



www.cropharm.com



FRL sample collector for
DT Offline System



ThermoFischer spectrophotometer
for DT Online UV/Vis System

Automation level >>

Dissolution Online System*

- Automatic UV/Vis-Analysis with spectrophotometer
- IPC or PVP pump
- Control via PC with Disso.NET 4 with Audit Trail and SQL database*
- 21 CFR part 11 compliant
- Direct data evaluation in the software

Dissolution On-/Offline System*

- Dissolution HPLC On-/Offline System or Dissolution On-/Offline System with UV/Vis
- Control via PC with Disso.NET 4 with Audit Trail and SQL-Database*
- 21 CFR part 11 compliant
- Automatic HPLC- or UV-Vis analysis with sample collector
- With HPLC: Automatic handoff of the sample to the HPLC-analysis



sales@cropharm.com



203-877-3859



www.cropharm.com

Further improved!

Not only on a large scale, but also on a smaller one.

New power switch for quick access

The power switch has been moved to the side of the unit. This makes it much easier to reach and operate. Furthermore, the power supply has been redesigned to 24V.



Improved, automatic tablet drop

The tablet drop has been relocated to the upper side of the DT head. This means that the filling can always be seen immediately. The tablet drop can be optionally be controlled automatically.

Further improvements on the DT head

The DT head has been further improved. In addition to mechanical changes to the guide and a new aluminium lock, the weight has been reduced. This makes the dissolution tester head easier to handle without losing its robustness.



sales@cropharm.com



203-877-3859



www.cropharm.com

New water outlet

The water outlet has been lowered further and also moved to the back. This way it does not interfere during normal use of the dissolution tester. In addition, the outlet has been equipped with a practical quick coupling that allows a hose to be connected quickly and without leaks.



Technical data

	DT 956	DT 957	DT 958
Height, width, depth	850 mm / 650 mm (without DH) / 650 mm		
Weight	42 kg		
Voltage	115/230 V; 50/60 Hz		
Fuses	2 A		
Protection class	I/EN 61140		
Protection type	IP 21/IEC 529		
Test stations	6 in 2 rows	7 in 2 rows	8 in 2 rows
Speed	20-250 U/min		
Vessel volume	400 ml / 1000 ml / 2000 ml		
Temperature control	1x PT 100 temperature sensor in water bath		
Operation	Touchscreen 7", 800x480 Pixel		
Sampling positions	High-head / Low-head / Cleaning mode		
USP methods	USP 1 / USP 2 / USP 5 / USP 6		
Ambient temperature during operation	+10 °C to +30 °C (Ambient temperature min. -5 °C below set temperature)		
Storage&Transport temp.	+5 °C to +40 °C		
Relative Humidity	25-80 % non condensing		
Interfaces	1x RS-232, 2x USB, 2x Ethernet/RJ45		
Heater DH 1520i			
Power	1500 W		
Temperature	15 - 50 °C (± 0,2)		
Interface	RS-232		





sales@cropharm.com



203-877-3859



www.cropharm.com