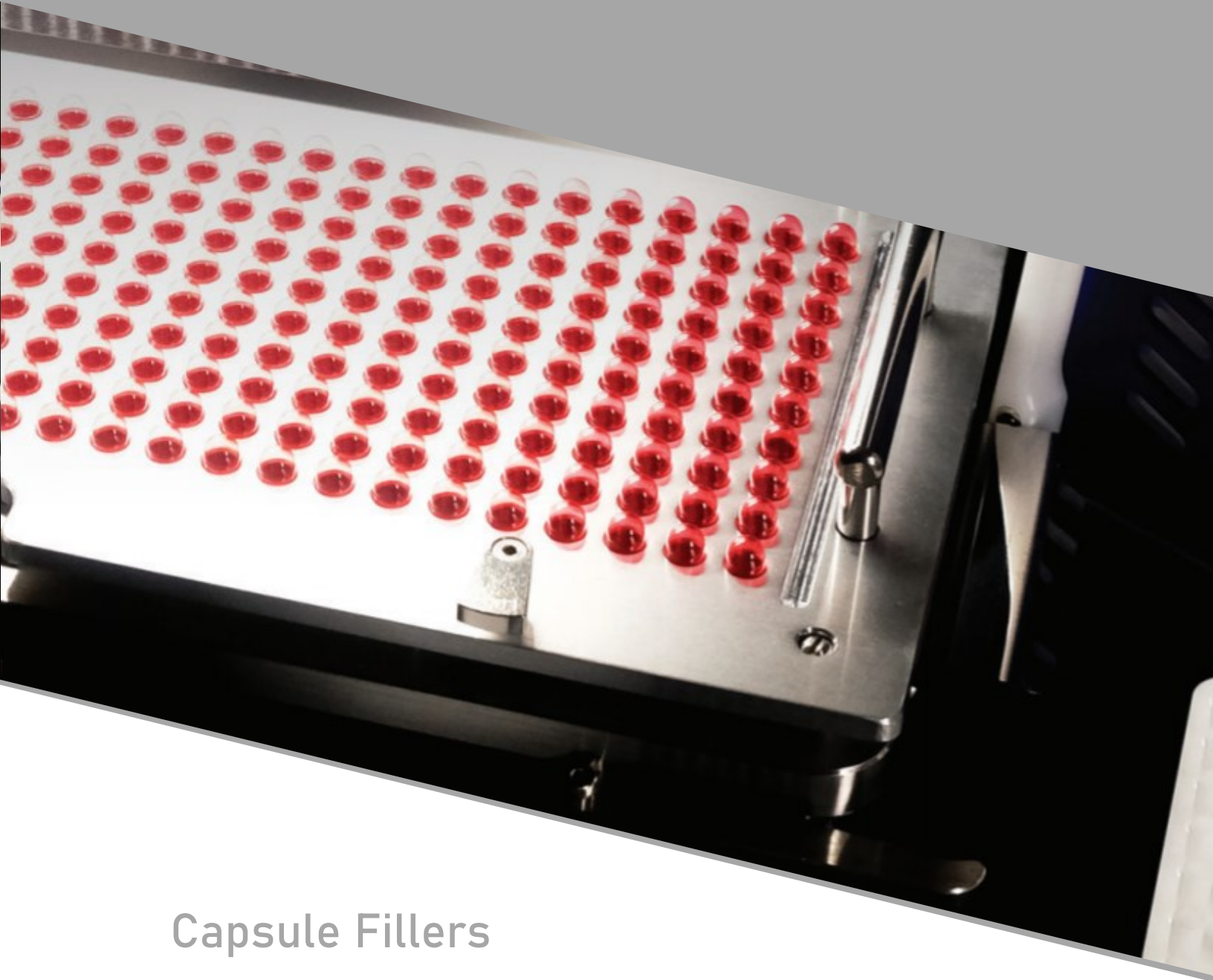


CroPharm

Solutions for Pharmaceutical and Nutraceutical



Capsule Fillers

**Compact Fillers for Pharmacies, Hospitals, R&D, Small
Productions, and Clinical Trials**

www.cropharm.com

Fastlock Full Metal Filler

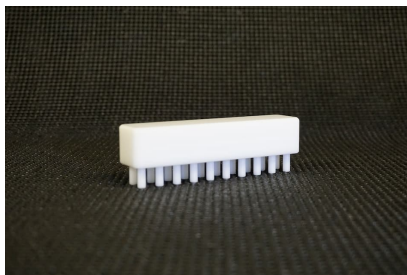
- The full metal line of capsule fillers are the ideal small scale manual capsule filling solution for compounding, small production, hospitals, R&D, and more.
- Each full metal capsule filling kit contains everything needed to fill capsules. Each kit contains the capsule filler, capsule loader, powder stop, tamper, powder spreader, and cleaning brush.
- The capsule filling process is very easy with the full metal line. First the capsule loader is used to correctly orient and load the capsules into the filler. The filler, with the fast-lock lever system, is then used to separate and open the capsules. The powder stop, tamper, and powder spreader are then used to fill the capsules and reach the desired fill weight. Finally, the cleaning brush is used to clean the holes after use.
- The full metal filler line is made of all metal for robustness and longevity. All materials of contact are FDA approved with proper finishing. All parts are made in house to ensure perfect tolerances and ease of filling.
- Capsule filling can also be made much more efficient and can be tailored to your specific needs thanks to our diverse list of optional accessories. The most popular accessory is the serial closer for easy snapshot closing of your capsules. Powder stops with reserve, manual capsule counters, vibration tables, large tampers, dedusting trays, and tablet dispensers are just some of the various solutions available for our capsule filling line.



Filler



Loader



20 Pin Tamper



Powder Stop (100/120)



Powder Spreader



Cleaning Brush

Fastlock Full Metal Filler Range



Full Metal Filler 100 Count

Capsule sizes available:
00, 0, 1, 2, 3, 4, 5.



Full Metal Filler 120 Count

Capsule sizes available:
000, 00, 0, 1, 2, 3, 4.
DB120: A, AA, AAel, AAA



Full Metal Filler 200 Count

Capsule sizes available:
000, 00, 0, 1, 2, 3, 4, 5*



Full Metal Filler 300 Count

Capsule sizes available:
00, 0, 1, 2, 3, 4.

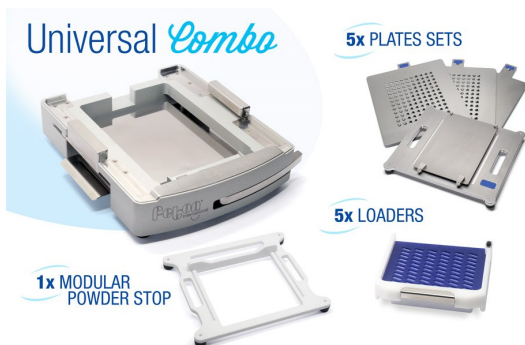


Full Metal Filler 400 Count

Capsule sizes available:
00, 0, 1, 2, 3, 4.

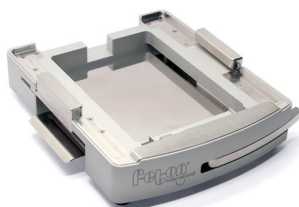
Universal Filler 120

- Capsules of **all sizes** processed by one single machine (000 > 4).
- **Enlarged filling area** for easy filling.
- **Stainless Steel 316** and Anodized Aluminum plates.
- Very robust **one-piece** frame.
- **Long lever** makes clamping easier.
- Upgradable after purchase to fill all capsule sizes
- *Fastlock* Lever locking system
- About **1200 capsules/hour** (may vary).



Universal Combo: Main Frame, 5 sets of plates + loaders, modular powder stop

Sizes: 000, 00, 0, 1, 2, 3, 4



Main Frame

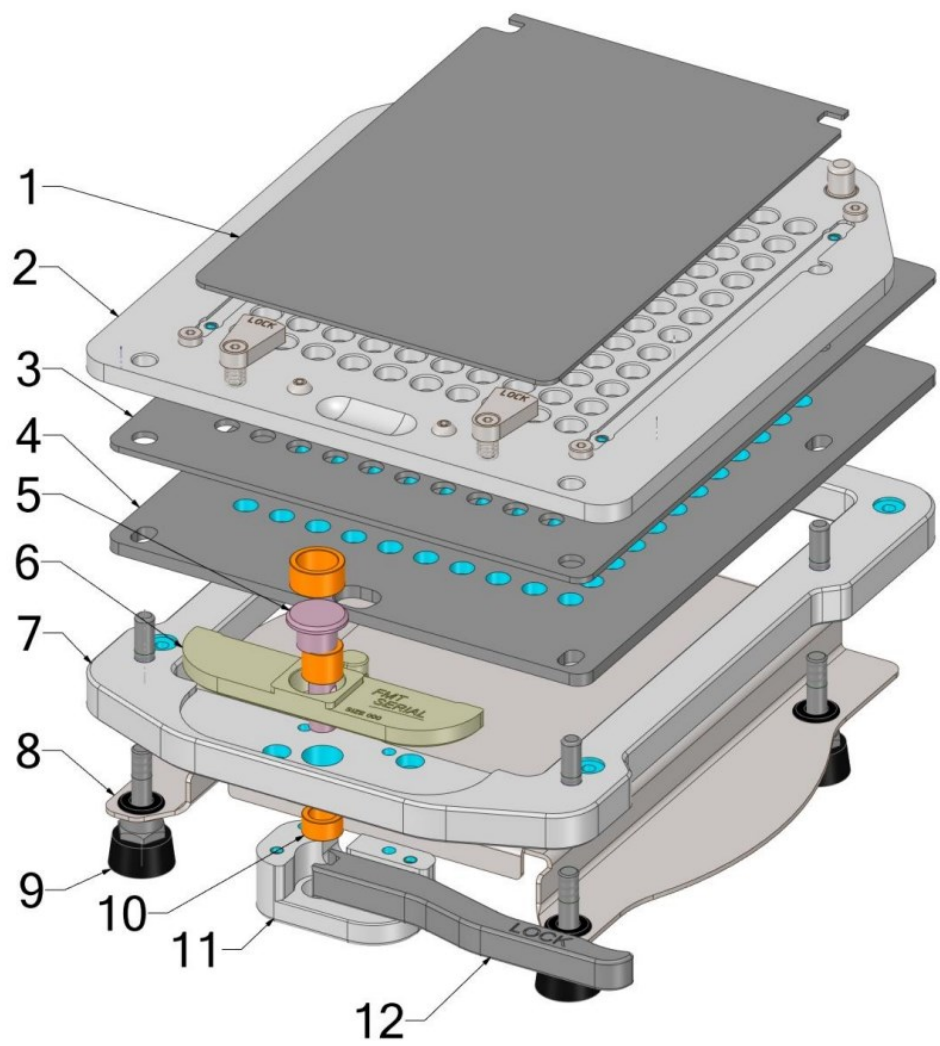


Set of plates + Loader for one size



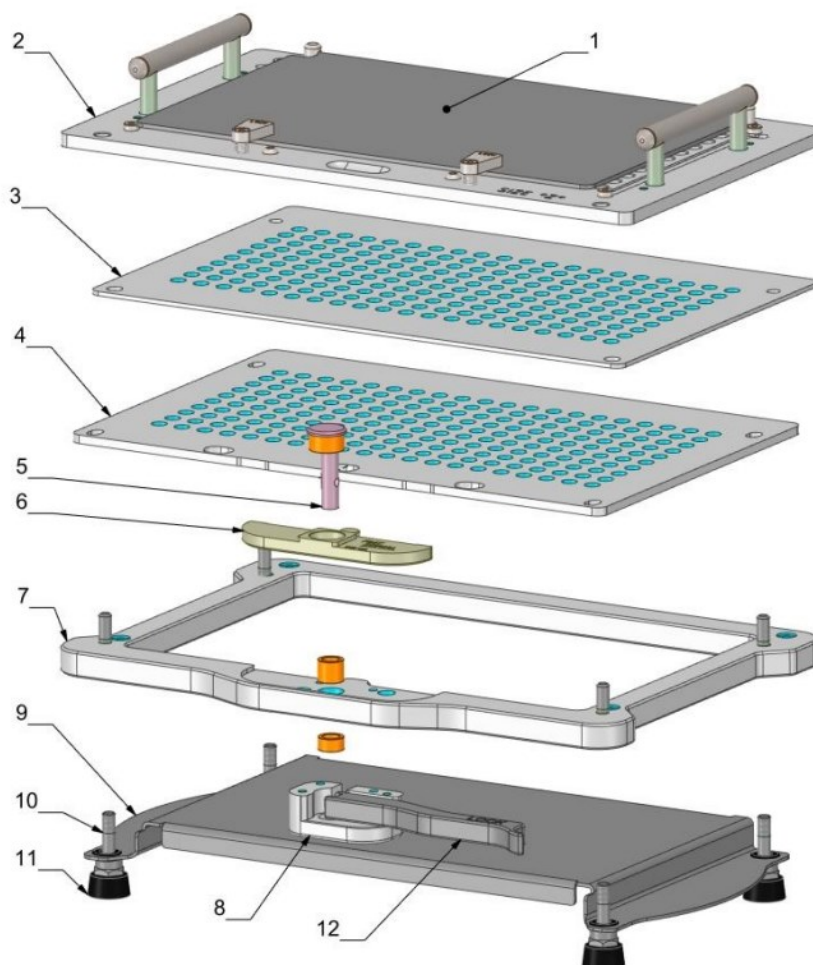
Modular Powder Stop

Full Metal Filler 100/120 Technical Data



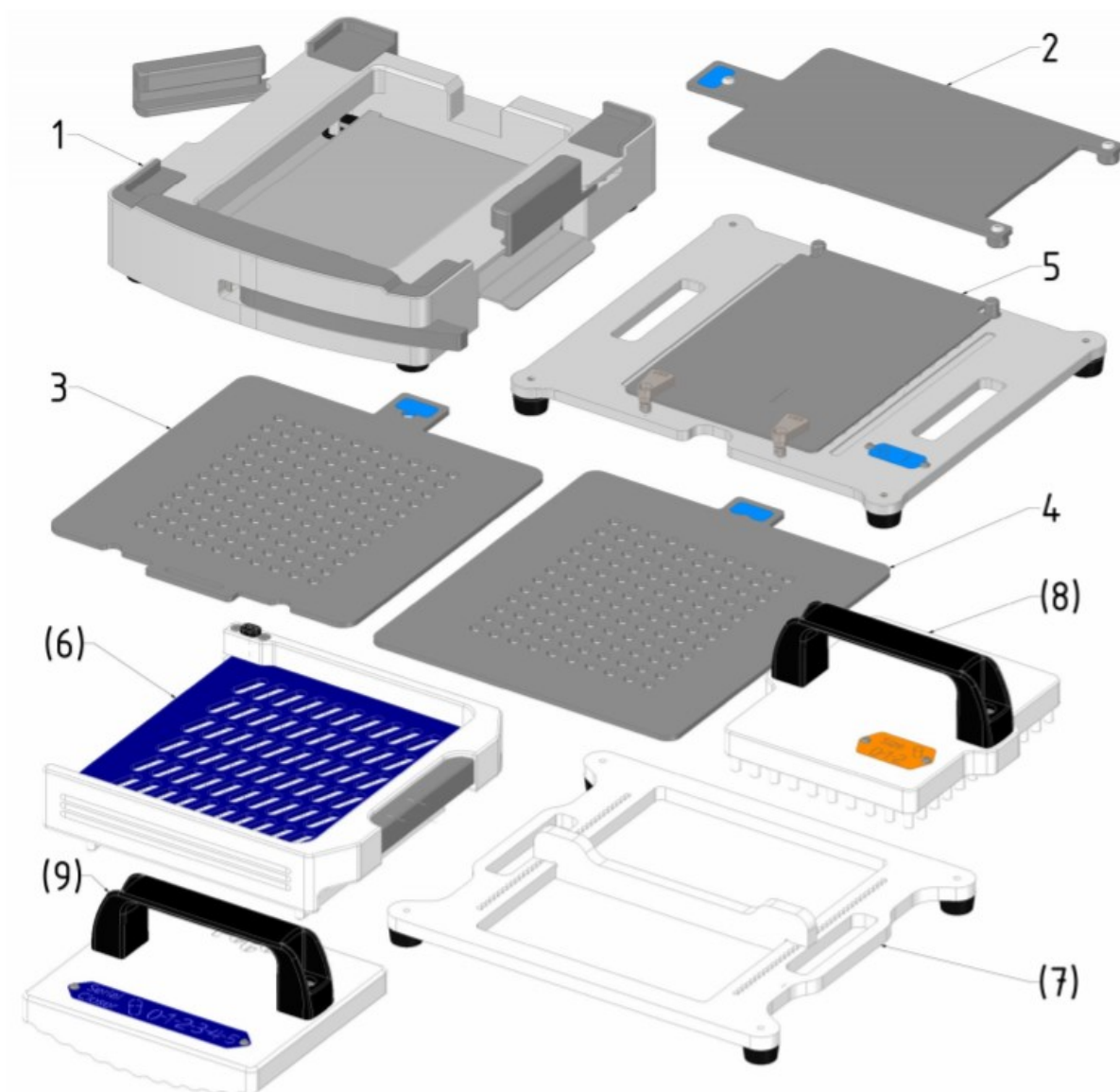
Item N°	Quantity	Name	Material
1	1	Lid	316 Stainless Steel
2	1	Top plate 6mm	Aluminium Durni-coat 520 Elecroless Nickel
3	1	Filling Plate	316 Stainless Steel
4	1	Bottom Plate	316 Stainless Steel
5	1	Eccentric Pin	316 Stainless Steel
6	1	Pusher	316 Stainless Steel
7	1	Frame	316 Stainless Steel
8	1	Base Plate	316 Stainless Steel
9	4	Foot	Rubber
10	3	Bushing	Bronze
11	1	Bloc Pusher	316 Stainless Steel
12	1	Lever	316 Stainless Steel

Full Metal Filler 200/300/400 Technical Data



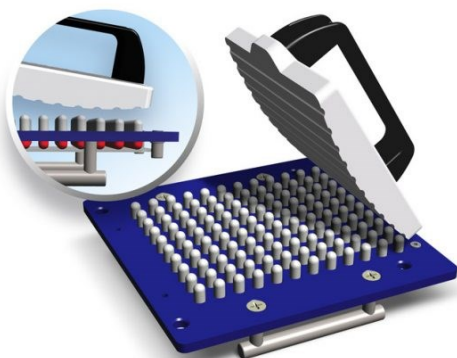
Item N°	Quantity	Name	Material
1	1	Lid	316 Stainless Steel
2	1	Top plate 6mm	Aluminium Durni-coat 520 Electroless Nickel
3	1	Filling Plate 2mm	316 Stainless Steel
4	1	Bottom Plate 4mm	316 Stainless Steel
5	1	Eccentric Pin	316 Stainless Steel
6	1	Pusher	316 Stainless Steel
7	1	Frame	316 Stainless Steel
8	1	Bloc pusher	316 Stainless Steel
9	1	Base Plate	316 Stainless Steel
10	4	Foot	304 Stainless Steel
11	4	Foot	Rubber
12	1	Lever	316 Stainless Steel

Universal Filler 120 Technical Data



Item N°	Quantity	Name	Material
1	1	Frame	316 Stainless Steel and Anodised Aluminium
2	1	Spacer Plate	316 Stainless Steel
3	1	Bottom Plate	316 Stainless Steel
4	1	Filling Plate	316 Stainless Steel
5	1	Top Plate	Anodised Aluminium and 316 Stainless Steel
6	1	Capsule Loader (optional)	POM, PMMA and 316 Stainless Steel
7	1	Modular Powder Stop (optional)	PMMA
8	1	Tamper 120 pins (optional)	POM
9	1	Serial Closer (optional)	POM

Capsule Filler Accessories



Serial Closer

The Serial Closer will save you time and effort as well as make the operation cleaner by avoiding direct contact with the capsules.



Tamper

You will need a tamper to push the powder down the capsule. There are many models available.



Vibrating Table

With some types of powder, you will obtain a more uniform fill weight or simply make the filling operation easier if you use a vibrating table.



Pellet Dispenser

Pellets are spheres ranging from 100 to 2000 microns in diameter and are often made of sugar. This tool allows you to easily fill your capsules with pellets.



Enteric Coater

An Enteric Coating is a polymer barrier applied on the capsules, to prevent their dissolution in the gastric environment.



Tablet Dispenser

Made on-demand, this dispenser will save you a lot of time when you need to fill your capsule with tablets.



About Us

CroPharm is the successor of Chemical and Pharmaceutical Industry Co. Ramsey, NJ founded in 1956. We specialize in tablet dedusting and capsule polishing for pharmaceutical processing and production. CroPharm also offers solutions for tube filling, crimping, capsule filling, and tooling inspection. We offer engineering service, customization, and after sales support.



@cropharm.inc



@CroPharm Inc



@CroPharm

Contents within this brochure are subject to change without notice.

CroPharm

132 Pepes Farms Rd
Milford, CT 06460

Call: +1 (203) 877-3859

Email: sales@cropharm.com

www.cropharm.com