

CroPharm

Solutions for Pharmaceutical and Nutraceutical



Crimper M

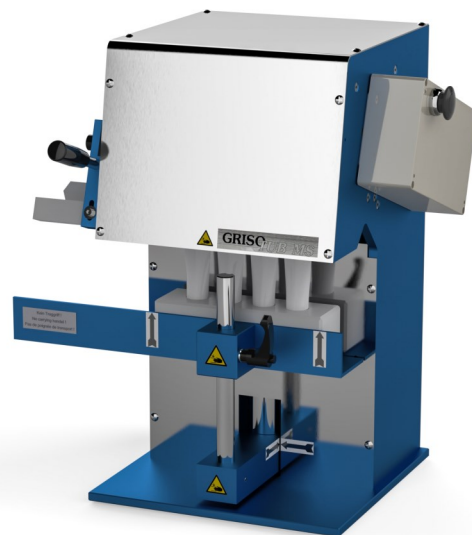
Crimper MS

Metal Tube Crimpers

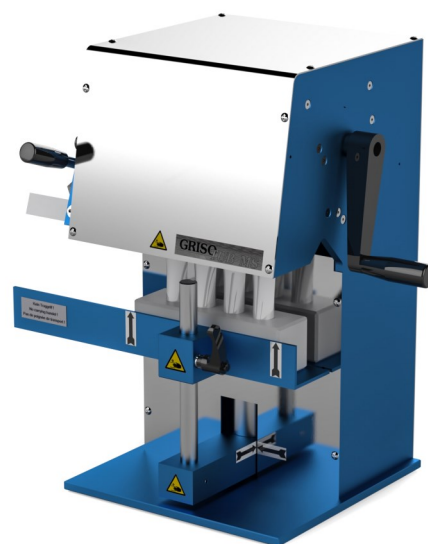
www.cropharm.com

Tube Crimper Type MS 2/3 M & MS 2/3

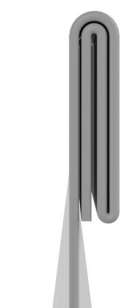
- The TUB MS 2/3 M is a motorized, very fast operating closing appliance for metal tubes. Depending on the tube diameter, 2 to 8 tubes are closed simultaneously. The tubes are supplied by means of multiple tube holders, specially made to the tube size (approx. 10 tube samples should be made available to us).
- The appliance is pulse controlled, whereby the inserted tubes are closed within approx. few seconds. The GRISOTUB MS M allows alternatively a double or triple folding.
- The desired folding type is selected by height adjustment. The filled tubes are placed into the multiple tube holder. The holder is placed manually between the sealing guides. The tubes end is then squeezed (avoiding any overpressure in the tube). After insertion of the holder in the appliance the closing process is released by pushing the buttons on both side of the appliance.
- The TUB MS 2/3 is a manual, very fast operating closing appliance for metal tubes. The machines is operated via crank to close tubes.



TUB MS 2/3 M



TUB MS 2/3



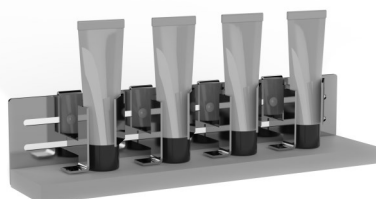
Triple Fold



Double Fold



Custom Tube Holder

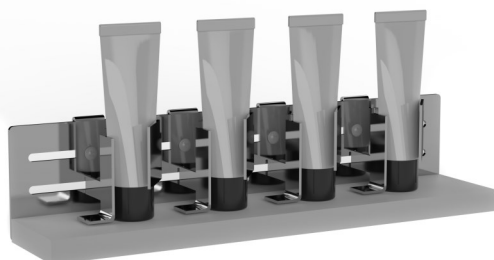


Universal Tube Holder

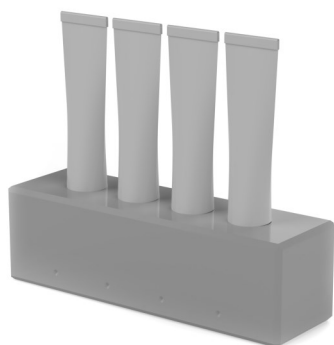
Technical Data		
Tube dimensions	length	260mm max.
	Tube Ø	50mm max.
Output	Dependent on tube Ø and operator performance Up to 3000 tubes per hour	
Connected load	230/115 VAC, 50/60 Hz single-phase (motorized)	
Dimensions	width	530mm
	depth	350mm
	height	515mm
Weight	approx.	29kg
Accessories	Min. 2 multiple tube holder per tube diameter	

Tube Crimper Type MS S

- Saddle fold is used in those cases where coding of both sides of the fold is desirable or required. The four folding points give a better seal. The TUB MS-S is the only equipment of its type that can produce a saddle fold economically and reliably. Having sealed the tubes by two turns of the hand crank in the same way as above, the multiple tube holder has been turned 180°. A third rotation of the crank produces the saddle fold.
- The TUB MS is an efficient manually operated system for closing metal tubes. Depends on the tube diameter from 2 to 8 tubes can be closed in one cycle. The required multiple tube holders are specially made to tube specification (approx. 10 tube samples should be made available to us).



Universal Tube Holder



Custom Tube Holder



Saddle Fold

Technical Data	
Tube dimensions	length 260mm max. Tube Ø 50mm max.
Output	Dependent on tube Ø and operator performance Up to 800 tubes per hour saddle fold
Connected load	Mechanical
Dimensions	width 530mm depth 350mm height 515mm
Weight	approx. 29kg
Accessories	Min. 2 multiple tube holder per tube diameter

Tube Crimper Type M

- With few steps metal tubes is closed with a double fold and embossed with a production code. This appliance is suitable for laboratories in pharmaceutical companies or the food industry as well as for small scale production in drug stores or pharmacies.
- The operation of this appliance is very easy. A filled tube is placed vertically and by pulling of the hand lever the tube end will be squeezed. Than the tube placed horizontally and bends it over to get a fold. This procedure has to be repeated for a double fold. Finally the tube is inserted in the coding slot for embossing.
- Double fold and coding in one machine.
- High quality mechanical construction.



Double Fold



Technical Data	
Tube dimensions	length 30-250mm max. Tube Ø 10-50 mm max.
Output	300-600 tubes per hour depending on operator performance
Connected load	Mechanical
Dimensions	width 120mm depth 200mm height 330mm
Weight	approx. 3.6kg
Accessories	Coding set for embossing of an expiration date or a production lot number



About Us

CroPharm is the successor of Chemical and Pharmaceutical Industry Co. Ramsey, NJ founded in 1956. We specialize in tablet dedusting and capsule polishing for pharmaceutical processing and production. CroPharm also offers solutions for tube filling, crimping, capsule filling, and tooling inspection. We offer engineering service, customization, and after sales support.



@cropharm.inc



@CroPharm Inc



@CroPharm

Contents within this brochure are subject to change without notice.

CroPharm

132 Pepes Farms Rd
Milford, CT 06460

Call: +1 (203) 877-3859

Email: sales@cropharm.com

www.cropharm.com